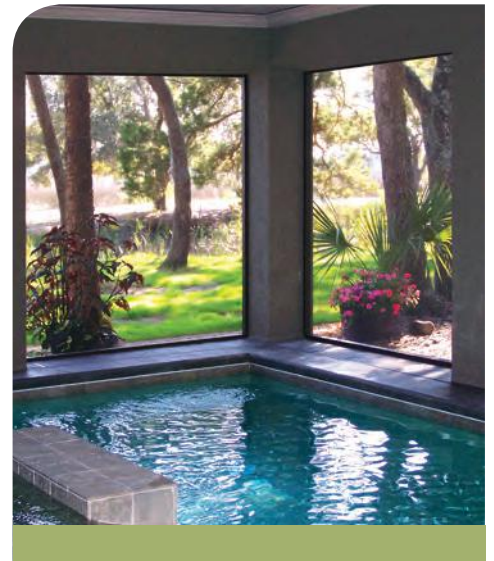


MADE
IN THE
USA 



ScreenRail

Designed to Keep You Outdoors



Certified PCI 4000 A-2 (AAMA 2604) Powder Coating
Lifetime Limited Warranty & A Virtually Maintenance Free Product

POWDER COATING



1

The raw premium-grade aluminum is inspected to be free of blemishes and is not exposed to the outdoor elements.



2

The product enters a heated acidic cleaning stage to remove extrusion debris and fabrication oils.



3-6

CLEAN: City water rinse
CLEANER: Recycling reverse osmosis water rinse
CLEANTEST: Pure reverse osmosis water rinse
SEALER: Dried-in-place aluminum sealer



7-8

A 200 MPH air blast removes water drops from the pre-treated aluminum. A convection oven completes the dry-off process.



9

Powder is applied with 18 automated and 2 manual spray guns. Compressed process air is dried to -35°F Dew Point for superior adhesion.



10

The powder coating is then bonded and adhered to the aluminum sub-straight in a 400 degree cure stage.



The powder coating application booth produces zero VOC emissions. Powder is stored and applied in a climate controlled positive pressure environmental room. Ten pre-treat system titration checks twice per shift maintain system parameters and ten QC checks are completed every hour on product coming off the powder-coating line. Parts are not touched by human hands during the pre-treat, dry-off, application and cure process to maintain ultimate cleanliness of powder-coated parts.



DSI is a PCI 4000 certified and verified AAMA 2604 and AAMA 2605 compliant powder coating applicator. The powder coating process is accredited by the American Architectural Manufacturing Association and the Powder Coating Institute. Our powder coating is custom blended from a Super Durable Polyester TGIC (Triglycidyl Isocyanurate) resin-base, using premium pigmentation to meet AAMA 2604 specifications. Our AAMA 2605 is a fluorocarbon polymer resin system.

ScreenRail

Expand your living area by bringing the outdoors inside. ScreenRail allows you to enjoy the outdoors without the insects. Featuring the option of either a structural balcony/railing system or heavy-duty kick panel system, easy to assemble sections, assembled universal door (right or left hand hinge) with heavy-duty frame, and durable flat spline to secure screen. With a Lifetime Limited Warranty and a virtually maintenance-free product, Screen Rail is a premium system designed to keep you outdoors without being "bugged" by insects.



FEATURES

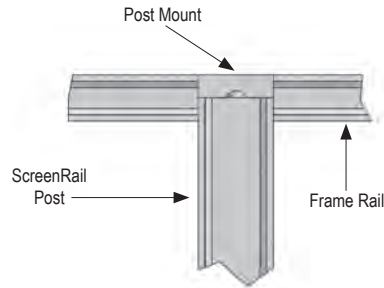
- Structural balcony and railing system
- Available heavy duty kick panel helps protect screen damage from feet and pets
- Easy to assemble 4', 6' and 8' sections
- Assembled universal door (right or left hand hinge) with heavy duty frame
- Certified PCI 4000 A-2 (AAMA 2604) compliant powder coating
- Durable flat spline secures screen
- Different size screen material* keeps gnats, black flies, and mosquitoes out

*Screen material not supplied by DSI

SCREENRAIL WITH STRUCTURAL RAILING



SCREEN RAIL POST

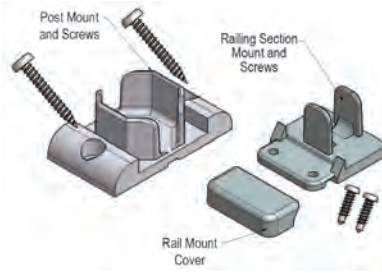


2" Post
8-1/2', 9-1/2',
11-1/2'



Frame Rail
8-1/2', 12'

POST & RAIL MOUNTS

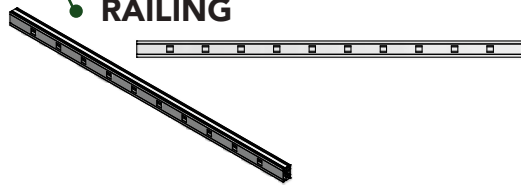


Post
Mount



Railing
Section
Mount

RAILING



Top/
Bottom
Rail

SPECIFICATIONS

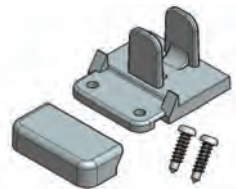
Lengths: 4', 6', 8'
Heights: 36", 42"
Rail Size: 2" (.063") w x 1-1/4" (.063") t
Baluster Size: 3/4" x 3/4" (.045")
Frame Rail Size: 2" (.045") w x 1-1/4" (.045") t
Frame Rail Lengths: 8-1/2', 12'
Post Size: 2" x 2" (.090")
Post Lengths: 8-1/2', 9-1/2', 11-1/2'
Door* Widths: 32", 36"
Door* Height: 80"

*Assembled universal door (right or left hand hinge) with heavy duty frame

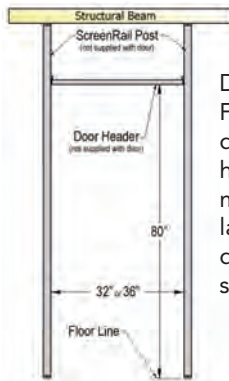
SCREENRAIL WITH HEAVY DUTY KICK PANEL SECTIONS



Door
Header
and Mid
Rail



Hardware



DOOR

Door Kit includes Frame, matching door jamb, door header with mounts, hinges, latch, closer kit, door sweep, and spline.



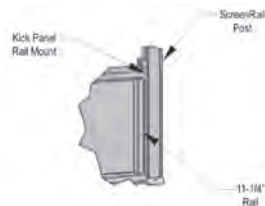
KICK PANEL RAIL MOUNT & POST



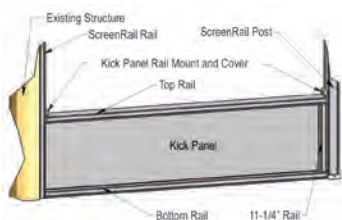
Kick Panel
Rail



Kick Panel
Mount



KICK PANEL

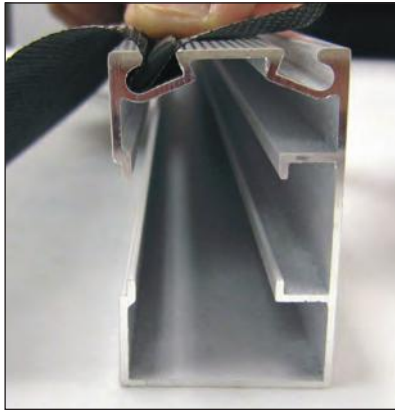


SPECIFICATIONS

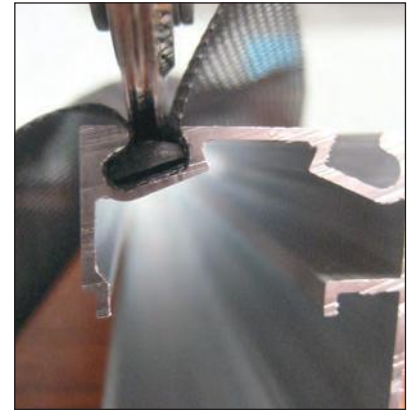
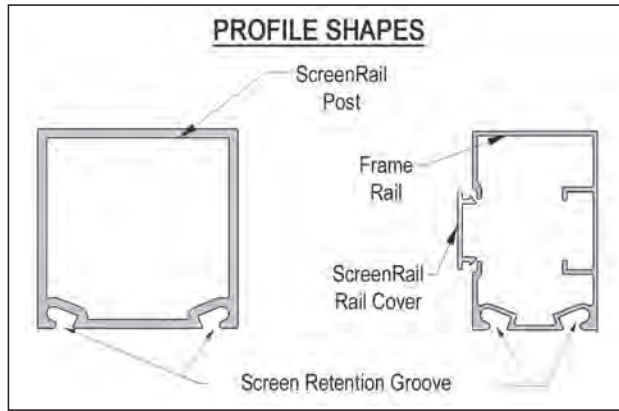
Lengths: 4', 6', 8'
Post Size: 2" x 2" (.090)
Post Lengths: 8-1/2', 9-1/2', 11-1/2'
Door* Widths: 32", 36"
Door* Height: 80"

*Assembled universal door (right or left hand hinge) with heavy duty frame

SCREENRAIL SCREEN INSTALLATION*



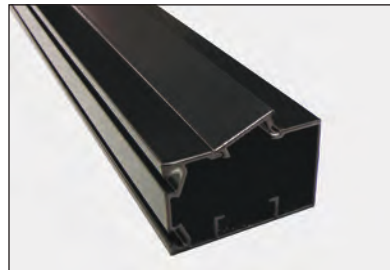
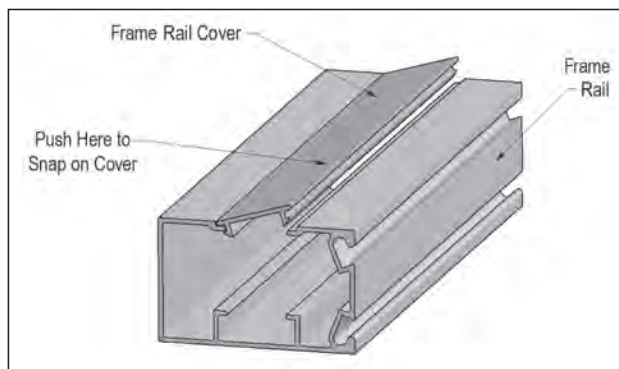
Screen & flat spine inserted into angled screen retention groove to insure tighter fit



Spline rollers used to fit screen & spline into groove



Screen is trimmed



ScreenRail cover snaps into frame rail
Color shown: Satin Black



*Screen material not supplied by DSI

STANDARD ALUMINUM COLORS



Satin Black



Black Fine Texture



Ninety Bronze



Bronze Fine Texture



Gloss Beige



Gloss White



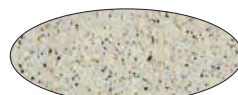
White Fine Texture



Clay



Speckled Walnut



Sandy Shore



Chocolate



Silver*

Colors shown are a close representation of the true color. Please consult actual samples for accurate powder coating colors.

* Upcharge for Silver with minimum order



ScreenRail

Some Examples of Compatible Screen Types

Charcoal Fiberglass Screen

Pool & Patio Screen

Super Screen

Tiny Mesh Super Screen

Pet Screen Mesh

80% Tex Solar Screen

90% Tex Solar Screen

3 STEP PACKAGING

The product is protected to insure that it arrives to you damage-free



1 Post & Rails Individually Sleeved



2 Cardboard Insures Added Protection



3 Heat-Wrapped & Banded Bundles



screenraildsi.com

We have tried to make this catalog comprehensive and factual. We reserve the right to discontinue at any time, without notice, colors, materials, equipment and availability. Since some information may have been updated since the time of printing, we are not responsible for typographical or pictorial errors. Materials shown may vary slightly from actual colors. ©Digger Specialties 2015 SP 11/15 99596